

DAINTY  
DESIGN NEWS NOW  
DINNY

# *High Point Market* SPRING 2026

EXCLUSIVE LOOKBOOK



# Contents

3 - WHY ANOTHER LOOKBOOK?

4 - ACCESSORIES & DECOR

7 - KITCHEN & BATH

10 - FURNITURE

16 - LIGHTING

21 - OUTDOOR

23 - RUGS

25 - TEXTILES

27 - WALLPAPER

29 - SELECT EVENTS

33 - ABOUT US



# Why another High Point Lookbook?

When the idea first took shape, it wasn't born from a lack of guides. The industry is no stranger to curated lists, expert edits, and market rundowns. What has been missing, however, is a lookbook grounded purely in editorial integrity.



This is not a compilation driven by advertising or paid placement. Every product featured has been selected on its own merit—design, function, materiality, and/or originality. It's a considered edit of product that truly stands out.

The same applies to our event coverage. Rather than a broad sweep, we've focused on the conversations that matter most—topics you've told us you want to engage with, explore, and experience firsthand.

The result is the Design News Now High Point Lookbook: a purposeful, editorially led guide designed to be both inspiring and practical.

We hope it becomes an indispensable companion as you navigate market—and we look forward to seeing you there.

*xoxo,*  
Rachel

# *Accessories & Decor*



# Accessories & Décor



## DELICATE CHINOISERIE I & II

Streamline Art

Some of our favorite Chinoiserie art to date. Special because it is printed on linen canvas with hand embellishments



## STILL MOVING

Uttermost

This piece stands out for its hand-painted refinement and effortless versatility.



## COGNAC BATHROOM ACCESSORIES

Barrett Bergmann Home  
You had us at "Cognac Leather and Polished Chrome"



## DEEPWATER VASE LARGE

Howard Elliott

A softly undulating rim and oceanic hue capture the essence of organic modern design.



## ALL ABOUT YOU VASES

Uttermost

A study in form and finish, these sculptural vessels bring Bauhaus-inspired geometry - where clean lines meet warm metallic depth.



## CANE BASKETS

Kalalou

Set of 3 handmade bamboo baskets, the perfect layering base for plants, organization and accenting.



## BUTTERFLY BASKET

Jamie Young Co.

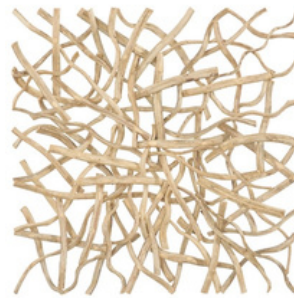
Handwoven from natural seagrass, this basket features a softly contoured hourglass silhouette and a calming neutral palette.

# Accessories & Décor



**LUMINA WALL  
DÉCOR  
REVELATION**

Sculptural wall décor featuring fluid, organic forms and a luminous finish.

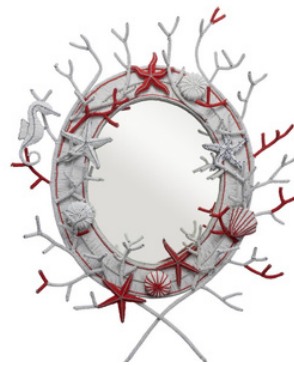


**VINE WALL TILE**  
Phillips Collection  
Sustainably sourced, kiln dried vines create a naturally abstract wall piece.

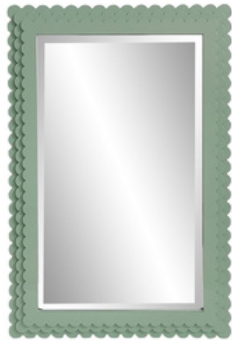


**VELORA PALOMA  
MIRROR**

Universal  
Wire brushed oak finish, dusty gold hardware and creamy white micro-reeding texture create layers of interest in this elegant mirror.



**SEA ME MIRROR**  
Ngala Trading  
Zimbabwean bead artists meticulously hand make the richly textured framed mirror.



**PASTEL SCALLOP  
MIRROR**

Howard Elliott  
Playful, yet polished, this happy mirror features a frame in the perfect shade of green.

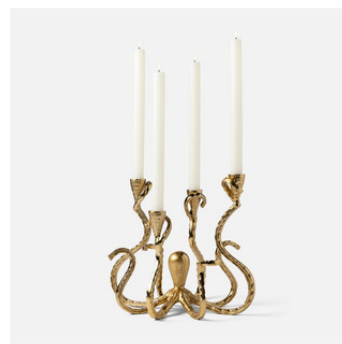


**MILLICENT FLORAL**  
Barrett Bergmann Home  
Sculptural simplicity pairs with natural elements in this petite faux floral.



**TRIOMPHE  
CENTERPIECE**

Arteriors  
Refined glamour with just the right touch of Art Deco and a Brutalist edge.



**MARLON  
CANDELABRA**  
Blue Pheasant  
Coastal gets sculptural in a fun, fluid candleabra.

# *Kitchen & Bath*



# *Kitchen & Bath*



## MORRIS WORKTABLE

Cambria

Part of the Stoffer Home x Cambria Collection, we like this island for its freestanding mobility, hardwood and choice of Cambria countertops.



## KINNSDEN DOUBLE VANITY

James Martin Vanities

This Americana inspired double vanity offers fashion and function and stole our hearts with its “hot tool organizer and dual USB power outlets.



## BROOKHURST DOUBLE VANITY

Four Hands

Fluted fronts and push latch openings make this oak vanity with bath-safe sealed marble a market favorite.

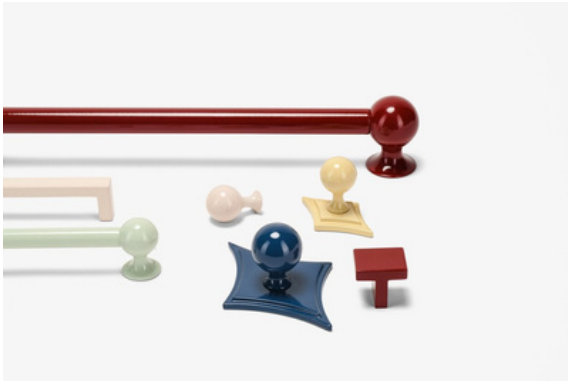
# Kitchen & Bath



## INTERACTIVE KITCHEN VIGNETTE

### Blue Star

Kerrie Kelley's custom color matched collection of kitchen appliances includes an induction range, hood and French-door refrigerator and freezer all in Sherwin-Williams deep green hue Hunt Club. Très chic.



## NEW CASTLE HARDWARE

### Modern Matter

Benjamin Moore x Modern Matter created this genius line of five color option hardware created in powder coat finished solid brass.

*Note: Showing at Design Social*



## MONTCLAIRE COLLECTION

### Art and Forge

Suzanne Kasler for Art and Forge created a classically French line of solid brass, hand cast hardware.

# *Furniture*



# Furniture



## AURORA SECTIONAL

Hooker Custom Upholstery

Custom is tops. And this sofa is available in 250 fabrics, 200 leathers, 9 finishes and multiple configurations.



## SAVILE LEATHER SOFA

Sarreid

A well-sourced Chesterfield cannot be underestimated—Sarreid's is crafted in top-grain leather, with classic rolled arms and tailored pleated detailing.



## ESTHER BENCH

Theodore Alexander

New to the Althorp Collection is Sunderland Brown. These heirloom inspired pieces, such as this caned settee, are classically elegant.



## TEIA CHAISE

Four Hands

Inspired by vintage Swedish textiles, this ash framed chaise is texturally dynamic and the perfect perch.



## ZAGAR OTTOMAN

Moss Home

Christopher Todd Living Collection. A warm shaded velvet silhouette rests on a solid wood base. The ideal retreat for feet or cocktails.

# Furniture



## COVE SLIPPER CHAIR

Co. House

Debuting at HPMKT is MENO Home x Co. House. This double-faced slipper chair pairs natural fiber upholstery with hand-hammered iron legs, creating a distinctive, design-forward piece defined by contrast and craftsmanship.



## MISSION SHELTER CHAIR

Stickley

A modernized Orkney chair receives the Stickley treatment in oak and is available in any Stickley oak finish, fabric or leather.



## SEVILLA WOVEN CHAIR

Alfredo Paredes

Spanish and mediterranean inspired design flow in this woven leather, low slung, structured chair.



## CHE BAR STOOL

Ngala Trading

A modern interpretation of the South African Riempeie chair, we favor this bar chair for the comfy seat it provides with a simple, yet chic design.



## ELORA DINING CHAIR

Sarreid

Faux-bamboo, performance upholstered with an open back and warm Palladio stain make this dining chair softly-tailored, functional and stylish.



## BRAYDEN SIDE CHAIR

Palecek

Renewable lampakanay rope is woven into a geometric backing and side accent for Palecek's refined hardwood dining chair.

# Furniture



## CHELSEA JUPE TABLE

Sarreid

Sarreid's sophisticated dining table has a self-storing expansion mechanism hiding additional panels as needed. Regency design with 21<sup>st</sup> century convenience.



## WREN DINING TABLE

Abner Henry

Helen Bergin for Abner Henry brings together solid oak and lathe turned legs to create a rustic yet elevated dining table.



## VELORA DOUBLE PEDESTAL DINING TABLE

Universal

Wire-brushed oak trimmed in gold is the basis of this double pedestal 86-inch dining table. The Velora comes with two 18-inch removable panels. Ideal for dinner for 2 or 12.



## MARQUIS TABLE BASE

Dunes and Duchess

Known for their bold colors and designs, Dunes and Duchess does it again with their geometrically defined table base in a saturated cerulean. *Note: Dunes and Duchess is showing at Design Social*

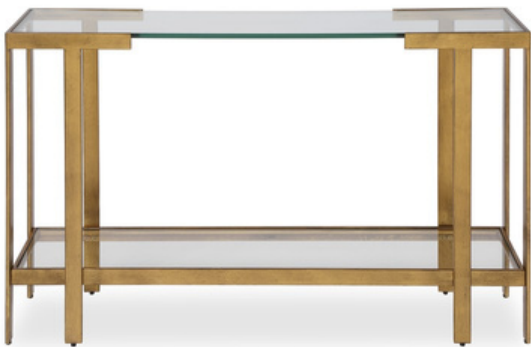
# Furniture



## EVIE LARGE BURL CREDENZA

Currey and Company

Inspired by 1920's shagreen furniture, this credenza is special for its mahogany mappa burl finish and Art-Deco nod to design.



## KENDRICK CONSOLE TABLE

Uttermost

This iron and glass console brings together the best of modern neoclassical and subtle Art Deco design.



## CLAIRE CABINET

Furniture Classics

Moorish architectural motifs on this cabinet's fretwork remind us of traditional mashrabiya screens, reimagined in a saturated red lacquer making it a bold moment.



## AVERY DESK

Hickory Chair

Created with David Phoenix, this smooth Art-Deco inspired, streamline-inflected desk merges architectural massing with tailored, mid-century sensibility.

# Furniture

## DRAPED DESK

Abner Henry

The Neo-classical drapery in this sculptural desk from Nikki Levy Interiors for Abner Henry celebrates the merger of classical reference and architectural form.



## STEWART DRESSER

Fairfield

Definitive classic proportions and clean-lined detailing with concealed storage make Fairfield's dresser a standout.



## TOTH TABLE

Currey and Company

Rooted in Brutalist design, this petite table pairs a burnished bronze base with a Calacatta Macchia marble top, offering a sculptural yet highly functional accent.



## NORFOLK PEDESTAL

Classic Home

We appreciate this modern monolithic pedestal inspired by classical plinths and expressive simili-pierre for its ability to elevate both objects and interiors.



## EIDOS ACCENT TABLES

Accent Decor

these biomorphic, sculptural accent tables are inspired by modern ceramics and Brutalist texture. They're our top choice for the reimagined materials for functional use.



# *Lighting*



# Lighting



## ETTORE CHANDELIER

Currey and Company

This Deco-inflected, sculptural chandelier merges geometric rhythm with modern architectural presence.



## PERSEPHONE CHANDELIER

Eichholtz

A study in balance and geometry, Corey Damen Jenkins' chandelier merges modernist architecture and sculptural artistry.



## WILL 'O THE WISP CHANDELIER

Arteriors

Barry Dixon's multi-port, imaginative piece is a statement to creativity and a renewed appreciation of flora in lighting.



## LYRIC CHANDELIER

Hubbardton Forge

Fluid movement and sculptural elegance abound in Hubbardton's looping metalwork and teardrop glass chandelier.



## JUNIPER CHANDELIER

Crystorama

Hand-wrapped beading against a soft fabric shade is a lesson in nuanced contrast for layered depth and refined visual interest.



## POPLIN CHANDELIER

Schonbek/Modern Forms

Softly geometric, WAC's chandelier delivers a balanced structure of texture and ambient glow.



## FLORENZ CHANDELIER

Visual Comfort

Refined organic elegance abounds in this expressive, mid-century Italian inspired chandelier.

# Lighting



## NORTE LINEN FLOORLAMP

Co. House

Meno Home x Co. House's bold, linen wrapped floor lamp with brass accents is a statement in composed craft.



## JEFFERSON HEIGHTS FLOOR LAMP

Hudson Valley Lighting

A rhythm of stacked, spindle forms paired with a tailored shade, delivers a quietly warm presence



## FOLLIES TABLE LAMP

Arteriors

Our hearts were stolen by fringe and Barry Dixon. A softened column with tribal adornments, this lamp is a balance of restraint and expression.



## WANDER ANTIQUE BRASS CORDLESS TABLE LAMP

Currey and Company

Designed by Bunny Williams, this golden lamp was inspired by a classic pewter candlestick.



## POLLY DOUBLE ARMED TABLE LAMP

Regina Andrew

Twin scalloped shades sit atop slim, natural brass stems in varied heights. An interplay of classic and modern.



## BERYL POPPIES SHADE

Pooky

British textile designer Ellen Merchant created a line of English countryside, botanical inspired shades. Beryl is our choice for its soft blues and nod to Arts and Crafts.

# Lighting



## CALA WALL SCONCE

Jamie Young

A blooming flower of glass petals, this sconce is reminiscent of mid-century Murano glass. Extra points for being damp-rated.



## WEST PARK SCONCE

Hudson Valley Lighting

Contemporarily pretty, this cocoa beaded sconce emits a honeyed glow.



## GABLE SWING ARM SCONCE

Regina Andrew

Mid-century, vintage French inspired, this sconce is one of composed function. Pinned up or hardwired, it's a warm hug of light.



## PETAL REIGN SCONCE

Varaluz

Designed by Kristi Hopper designed this debut collection merges the botanical with sculptural form. We especially appreciate its femininity and strength.



## ENKO

Hudson Valley Lighting/Corbett

Noz Nozawa's latest collection with Corbett shows off Brutalist and organic influences through striated surfacing paired with relief carving.



## DAINES VANITY LIGHT

Kichler/Coletto

Streamline Moderne and unadorned deco abound in Coletto's Daines bath light. We especially approve for its dimmable capabilities, damp rating and ADA compliance.

# Lighting



ARISTOCRAT PENDANT  
Varaluz

Tensile form, softly deco and recollective of sunburst motifs, this pendant is our pick for its near explosive composition of line, light, and movement.



PIA PENDANT  
Hudson Valley Lighting

Part of the Mitzi collab with Hillary Mat, Pia pairs soft modernism and 70's Italian design. We especially love its high gloss base.



ESME  
FLUSHMOUNT

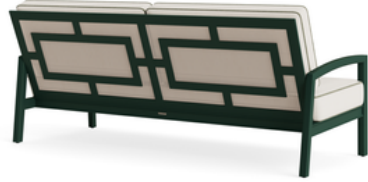
Crystorama

Delicately floral, with hand-blown purple glass petals, this flush mount is the piece your spaces are yearning for.

# *Outdoor*



# Outdoor



## PALMETTO SOFA

Brown Jordan

Lowcountry influences are reimagined through classic forms, resulting in a quietly modern collection that balances heritage with comfort for Brown Jordan's Palmetto collection.



## MADURA SOFA

Bernhardt

A solid teak frame paired with inviting, plush cushions elevates this outdoor sofa with a balance of durability and comfort.



## ORIGINAL SWING

Uwharrie

Not a new intro, but a re-introduction to a solid basic. This swing is our pick for its availability in treated pine or polymer and numerous colors.



## BELLAGE OUTDOOR SWIVEL CHAIR

Four Hands

Faux banana leaf braiding brings layered texture to Four Hands' outdoor slipper chair, but it's the unexpected swivel base that adds a layer of functionality.



## MADRONE INDOOR/OUTDOOR BISTRO TABLE

Uttermost

Form and function in a weather-resistant dark bronze finish make this table our pick for outdoor dining.



## TANGAROA BENCH

Edge34

Crafted in reinforced concrete, this multifunctional piece serves equally well as a bench or sculptural accent, balancing durability with striking form.



## DRAGON PAGODA GARDEN STOOL

Port 68

Part of the Winterthur Collection, this classic accent brings Chinoiserie dragon and pagoda motifs forward in vibrant green

# Rugs



# Rugs



## WOODRIFF

Loloi

Flatwoven with a textural top-stitch, this contemporary rug in a new neutral is just what we're looking for.



## ALLEGRA

Armadillo

Woman-owned and focused on artisan sustainability, Armadillo's hand-knotted wool rug is as purposeful as it is beautiful.



## ART DECO

Rug & Kilim

A specimen of minimalist Chinese Art Deco, this wool rug incorporates velvety florals and structured geometrics balanced by ivory and jade tones.



## WINSTON

Feizy

Biomorphic design in hand-tufted loop and cut-pile wool, this rug creates rich texture and subtle visual movement.



## BAZAAR

Capel Rugs

Globally inspired and patchwork-driven this hand-knotted wool design blends tribal heritage, vintage character and painterly abstraction.



## SOLID

Tamarian

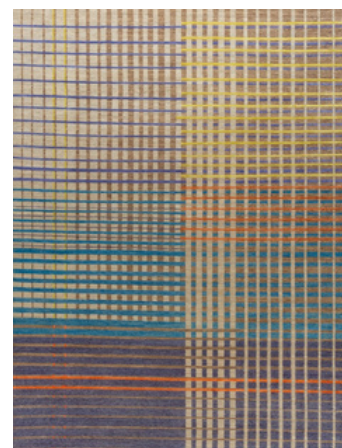
Sometimes, the simplest of products can be the most difficult to source. Enter Tamarian's custom, wool and silk, hand knotted rug collection.



## PURE CORD

Nourison

Part of the Donna Karan collection, this handwoven wool and jute rug is the perfect layering base.



## PLAID II

French Accents

Deconstructed plaid layers a modernist grid system with Art Deco geometry to create a piece that feels as much like a facade study as it does a textile.

# *Textiles*



# Textiles



## HIGHGROVE TOILE & WINDSOR STRIPE

Peacock Alley

Peacock Alley has entered the building with its Caitlin Wilson collab. Wilson's take on a floral toile and classic stripe is reminiscent of the bygone, and best, days of vintage Laura Ashley.



## OMNI PILLOW

Lissoy Textiles

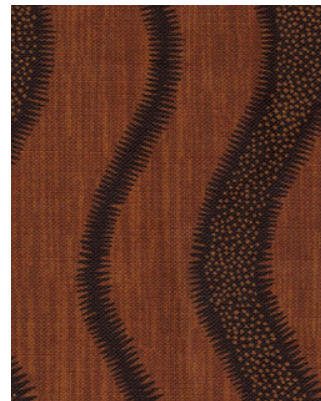
Piece-dyed, stone-washed, heavy linen is woven in France with special attention to refined finishes in Lissoy's refined pillow.



## BIRDSONG PILLOW

Threads Soft Goods

Heritage craft Queen Eileen Applebaum has expanded her pillow collection to include this nuanced, moving and dimensional pillow in raw silk, raffia and intricate embroidery.



## JUNIPER STRIPE

Maresca Textiles

Inspired by Southern Juniper trees, this flowing fabric is digitally printed in linen and cotton.



## YACUMA BOSQUE

Kravet

Alfredo Paredes' new textile collection with Kravet, draws on earthy palettes and emotional resonance. We admire this design for its mixed greens and heritage focus.



## PROTEA GARDEN

Ngala Trading

Hummingbirds, Protea blooms and South African inspired botanicals abound in Ngala's pink hued fabric. Available in outdoor and indoor fabrics.

# *Wallpaper*



# Wallpaper and Paint



## FAUX BOIS MUSTARD

Counterpart Studios

Blue and yellow are long-time pairing faves. Here, they come together in the most delicious way via Counterpart's digitally printed, on-demand faux bois.



## GANDER

Soicher-Marin

Dana Gibson is back with her painterly take on geese. Available in several colorways, fire rated, water and stain resistant.



## RAMO

Thibaut

Hand-made from dried water hyacinth leaves, this wallpaper is special. We adore the rich contrast of ebony and coffee. Two additional colorways available.



## ANDREWS FLORAL

Maresca Textiles

Owner Kathryn's great-grandmother's home inspired this olive hued, Jacobean floral wallpaper. Digitally printed in IL.



## INCARNADINE

Farrow & Ball

The deepest, richest red with a scandalously Shakespearean inspired-name. Made by the first company to push water based paints that are 95% vegan friendly and wildly luxurious. *Note: Pop-Up at Theodore Alexander.*



## DUSK TO DAWN

Benjamin Moore

A whispering shade of lavender with just a touch of grey, she's another new neutral. *Note: Benjamin Moore is showing at The Design Social*

# Select Events



# Select Events

## DAILY

### ARTIST IN RESIDENCE: KELLEY ESTES

Celebrating the connection between art and design, Bernhardt presents it's Artist in Residence featuring Nashville-based artist and interior designer Kelley Estes. Estes is known for her sculptures inspired by nature and human form. *Bernhardt, 2<sup>nd</sup> floor Gallery, 101 North Hamilton*



### THE DESIGN SOCIAL

The celebrated market of expertly selected craftsmen and brands makes it's debut at High Point from April 25-28<sup>th</sup>. *The Amadi Collective, 501 South Centennial St.*

### DAILY LUNCH

A High Point Gem for designers at market, the IHFC Designer's Lounge is the calm breathe of fresh air where designers can relax, recharge and refresh. Offering WIFI and charging stations. Lunch served daily 11:30 AM - 1 PM *IHFC Designers' Lounge, 7<sup>th</sup> floor*

## FRIDAY

### 2 PM - WHAT DOES "TO THE TRADE" REALLY MEAN?

Laurie Laizure, truth-teller and leader in interior design learning and growth, heads this panel focusing on insights into simplifying sourcing, gaining efficiency and expanding customization choices. *Hooker Furnishings, Showplace, 3<sup>rd</sup> Floor*

### 3 PM - REDEFINING THE LUXURY CLIENT: PROFIT, STRATEGY AND THE EVERYDAY MARKET

Learn how to create profit and experiences across varying budgets while building revenue, loyalty and resilience. Speakers include Cheryl Clendenon, Ryan Williams, Shandy Arend, and Keffie Lancaster. *Feizy 309 North Hamilton*

## FRIDAY

### 3:30 PM -6:30 PM THE DESIGN SOCIAL X AMADI COLLECTIVE

Opening Preview and Cocktail Reception. **R.S.V.P. REQUIRED** *The Amadi Collective, 501 S Centennial St.*

### 4-6 PM - BOOK SIGNING WITH BENJAMIN REYNAERT

Reynaert's Book, "The Layered Home" is a feast for the eyes and our editorial, design loving hearts. *313 Space, 313 South Centennial Street*

### 4 - 7 PM HICKORY CHAIR'S 115<sup>TH</sup> ANNIVERSARY PARTY

The anniversary is cool but we're really excited for is the debut of David Phoenix's fourth collection of singular furniture. *Hickory Chair, 200 North Hamilton, 300, Floor 3*

### 4:30 - 6 PM WITHIT'S NETWORKING EVENT

Join the ladies of WithIt, hosted by Sunbrella, to learn about the organization and how it supports women in the industry. *Sunbrella Activation - Showplace Walkway*

### 5 PM - HOUSE OF DUVÄL X SHERRILL LAUNCH PARTY

One of the most highly anticipated launches at market with one of our favorite, wildly talented humans. Extra points for Sherrill's party perfect layout with lots of room and seating. *Sherrill Furniture, 3<sup>rd</sup> floor, 315 Fred Alexander Place*

## SATURDAY

### 10 AM-1 PM MY ROWE DESIGN MIXER

An immersive market tradition, this year's mixer features three uniquely designed spaces by W Design Collective, Modern Vintage Home and Danielle Rose Design Co. with collaboration from Crypton. Also, y'all, a savory biscuit bar. Mic drop moment. *Rowe Furniture, Showplace, 1100*

### 11 AM - CELEBRATION SOUTHERN BRUNCH AND BOOK SIGNING WITH CHLOE WARNER

Celebrate the 10<sup>th</sup> anniversary of Barrie Benson Studio's collection AND be one of the first to score a copy of the design book that has set quiet anticipation, "This Must Be the Place". *Highland House, 200 Steele, 121*

# Select Events

## SATURDAY

### 12 PM - LUNCH AND LEARN FROM PRINCIPLE TO POWER PLAYER: BUILDING INFLUENCE, AUTHORITY AND LONGEVITY IN DESIGN

Join Dwayne Bergmann, Cat French and Christopher Grubb for a panel discussion moderated by Gail Doby on how established designers can evolve beyond growth in volume to long-term influence and strategic positioning.  
*Sarreid, Commerce & Design, 3D, Floor 3*

### 12:30 PM - INVISIBLE LUXURY: HOW HIDDEN TECHNOLOGY AND PREMIUM MATERIALS ARE REDEFINING THE BATH

Carisha Swanson, Mikel Welch, Kelly Collier Clark, Pam Durkin, and Jake Slatnick will discuss how invisible tech and premium materials are impacting luxury bath design.  
*NKBA/KBIS, Broad Hall, 300 W. Broad Avenue*

### 3-5 PM - DESSERT PARTY

Wind down your day with Winterthur and Port 68 as they host a lite and lovely dessert party while showing their newest pieces from the renowned museum's design collection.  
*Port 68, IHFC Interhall, IH105*

### 3-5 PM MENO HOME X CO.HOUSE DESIGNS COLLECTION: MEET THE DESIGNER

Meet Jerri Hobdy, the designer behind MENO Home, a first of its kind collection of furniture and lighting that is redefining sustainability through natural, solid materials, chemical free upholstery and third-party certifications.  
*Co. House Designs, IHFC, Commerce, IH300*

### 4:30 PM - DESIGN THAT CHANGES HOW PEOPLE FEEL

Neuroaesthetics expert Nicole Baxter explores how design shapes behavior and outcomes, sharing research-backed strategies to create calm, guide projects and strengthen communication.  
*Edge34, 1700 West Green Drive*

### 5 - 7 PM - NEWS NOW MEDIA MARKET PARTY

Join the entire team of News Now Media for an evening of cocktails and light bites.  
*Home Furnishing Hall of Fame, 311 S. Hamilton*

## SUNDAY

### 10 AM - WHAT IT TAKES TO ATTRACT, CLOSE, AND KEEP CLIENTS WHEN THE MARKET GETS TOUGH

A direct, no-nonsense conversation on what designers are navigating now—and what's working in an unstable market. Four seasoned coaches and industry leaders deliver actionable strategies, real-world examples and clear next steps. You will gain sharper messaging to attract better clients, practical tools to close with confidence and immediate actions to stabilize and strengthen your pipeline. Panelists Nancy Quinn, Lesley Myrick, Katie Decker-Erickson, and Michelle Lynne.  
*Uttermost, IHFC, Commerce C448*

### 10 AM - 12 PM DESIGN SOCIAL X AMADI COLLECTIVE BLUEGRASS BRUNCH

A Bluegrass Brunch featuring live music and Southern bites for designers, editors, and makers. Why we're loving it? Teil Duncan Heinley on the tunes and a the weaving demonstration from a Guatemalan Craftsperson  
**R.S.V.P. required**  
*The Amadi Collective, 501 South Centennial St.*

### DNN EVENT

#### 11 AM - BRUNCH AND PANEL: PROTECT YOUR MARGINS

Andrea Schumacher, Kurt McKeithan, Lisa Kahn, and Tula Summerford discuss gaining exceptional service from key vendors, navigating the pitfalls of online competition, and product customization to increase your margins. Moderated by Susan Jones, Group Publisher of Design News Now/Lighting News Now/Home News Now.  
*Hubbardton Forge, IHFC, Commerce IH211*

#### 12 PM - THE FUTURE OF CRAFT IN AN ALGORITHMIC AGE

What does craft mean in in the 21st century? This panel explores how to source the unexpected, work with materials over products, and create work that feels original and enduring. Featuring Cortney Bishop, Rebekah Zaveloff, Ashley Hughes, Taz Ahmadi and Isabel Ladd, moderated by Ericka Saurit.  
**R.S.V.P. requested**  
*The Amadi Collective, 501 South Centennial St.*

# Select Events

## SUNDAY

### 3 PM - FISHER WEISMAN MEET & GREET

Never ones to get too excited for a market meet & greet but this design duo's collection of lighting is a standout.

*Visual Comfort, Commerce & Design, 2A, Floor 2*

### 3 PM - SCIENCE IN DESIGN KEYNOTE

The freshest and most interesting keynote ever.

This one focuses on how neuroaesthetics and biophilic principles foster well-being in design and are exhibited with a virtual showhouse. Panelists include Mike Peterson, Angela Harris, Kat Blue, Erica McLain, Marie Cloud and Gabrielle Kozhukh-Joo.

*High Point Theater*

**Cocktails to follow at Crystorama, IHFC, Hamilton, H241, Floor 2**

### 4-6 PM - GARDEN PARTY WITH INTERIOR DESIGN COMMUNITY AND LAURIE LAIZURE

Breakout your best dress for the IDC's fun and open garden party.

*Currey and Company, IHFC, Main, M110*

## MONDAY

### DNN EVENT

#### 10 AM - FIRESIDE CHAT SERIES - AI ESSENTIALS: WHAT EVERY DESIGNER SHOULD KNOW

The future of design is here. This panel delivers a practical AI starter kit for growth-focused designers—tools to boost visibility, profitability, content and leads—plus a bonus session on maintaining authenticity. Moderated by Design News Now Editor-in-Chief Rachel Fasciani, featuring Monika McCommon, Dalia Soles and Sarah Danielle.

**R.S.V.P. suggested**

*Regina Andrew, IHFC, Commerce, IH006*

## MONDAY

### 110 AM-1 PM MY ROWE DESIGN MIXER

An immersive market tradition, this year's mixer features three uniquely designed spaces by W Design Collective, Modern Vintage Home and Danielle Rose Design Co. with collaboration from Crypton. Also, y'all, a savory biscuit bar. Mic drop moment.

*Rowe Furniture, Showplace, 1100*

### 11 AM - A SLICE OF INSPIRATION WITH DOT & PEARL'S BAKERY

Great product + cake + local small business learning and support? We're there. Villa & House brings local bakery Dot & Pearl's slices together with business insight, a look at their handmade approach and entertaining ideas.

*Villa & House, IHFC, Commerce, IH510, IH607, IH609, IH610*

### DNN EVENT

#### 4 PM - WOMEN BEHIND THE SCENES: COLLABORATIVE EDGE

Women consumers are the backbone of the interiors business—we shop, specify, and buy. So, shouldn't we be a key element in product development and marketing? Join Editor-in-Chief Rachel Fasciani of Design News Now and creator of The Chic Peek as she talks with Laura Levinson, Janine Wagers, Stephanie Lena, and Kayla Miller, about how women in leadership are changing product development and marketing to be more tailored to the logistical and aesthetic needs of designers

**R.S.V.P. required**

*Universal Furniture, IHFC, 101 South Hamilton St.*

## TUESDAY

### 10 AM - THE FUTURE OF FABRIC: HOME TEXTILE TRENDS FOR FALL/WINTER 26/27

A forward look at the ideas shaping next-season textiles. Jaye Mize and Carrie Dillon unpack the colors, materials and cultural shifts driving Fall/Winter 2026/27—what they mean for product development and the evolving consumer mindset.

*The Point, on Commerce Avenue*

# *About Design News Now*

## **How We're Different**

Design News Now was created for professionals who don't just follow the design industry — they shape it.

Our platform serves a community of passionate leaders across the interiors and home furnishings market who are committed to elevating the standards of their craft and the business of design. Each week, we publish exclusive news, industry insights, and practical resources designed to keep readers ahead of the curve.

More than a news source, we connect designers, manufacturers, retailers, and industry innovators through thoughtful reporting and meaningful dialogue. Our goal is simple: to deliver the information, perspective, and connections professionals need to grow their businesses and move the industry forward.

## **About Us**

Design News Now is powered by a leadership team with decades of experience at the intersection of design, media, and the home furnishings business.

Rachel Fasciani, Editor-in-Chief, brings a multidisciplinary perspective shaped by years in the home and interiors market. A contributor to COVER Magazine and creator of the design editorial platform The Chic Peek, Fasciani is recognized for connecting design, business, and culture through thoughtful reporting and industry insight. Her career spans luxury and mass-market brands across marketing, PR, licensing, product development, and editorial strategy — giving her a uniquely comprehensive view of the industry she covers. [rachel@homenewsnow.com](mailto:rachel@homenewsnow.com)

Susan Jones, Group Publisher, leads strategic growth for News Now Media, working closely with brands and partners to develop integrated marketing solutions across platforms. Her strong background in publishing leadership at Furniture, Lighting & Decor and associate publisher of Furniture Today, she is known for building high-impact partnerships and delivering measurable results for clients while helping expand the reach and influence of the company's media brands.

Rick Harrison, president of HCG Media and founder of News Now Media, has built a career creating media platforms that serve and strengthen the home furnishings industry. His background includes leadership roles at Furniture Today, Interiors Magazine, Kids Today and Casual Living, along with serving as founding publisher of InFurniture for Condé Nast. Through HCG Media, Harrison continues to innovate in advertising technology, media services and premium content development.